



# JPAC Newsletter

October 25, 2019  
No.10

---

## Contents

---

Dear JPAC members

Lecture in Kansai,  
Theme: Drawing gemstones and  
jewelry, and application for  
china painting

Visit to KEISEI ISOGAYA MUSEUM

Visit to SUPERCRAFT by Toshi-  
kane jewelry

New member information

Editor's note

---

## "JPAC is"

---

---

### Japan Porcelain Artists' Club

---

---

JPAC is a non-profit organiza-  
tion.

We organize seminars and exhi-  
bitions to improve  
our skills.

We encourage fellowship with  
our members and  
international artists.

Our purpose is to promote  
porcelain painting.

---

## Dear JPAC members,

It is so nice that Autumn makes JPAC members active.

Looking back to this term, we had the first workshop in the western part of Japan and put our consideration into our website contents more fruitful for all the members.

We are working hard on "JPAC International Exhibition 2020, Theme: Festival", that is the great chance for the members to meet international porcelain artists to encourage each other. We also cannot wait to see art works of all JPAC members. The information of the exhibition will be shown on the JPAC website.

Access to "<https://j-pac.jimdo.com>" and the password is "handpaint".



Etsuko Hanajima  
JPAC President

## Lecture in Kansai, Theme: Drawing gemstones and jewelry, and application for china painting

In June 28th, the lecture and work-  
shop, which was led by Mrs. Rie  
Hara who is the Jewelry historian  
and China and painter as well, was  
held in Osaka.

After studying the history of cuts  
and shape of the stone, they paint-  
ed different cuts and shape of  
stones on the paper.

Then they painted "Stmacher" which  
is large brooch like jewelry put on



the neckline of formal dress. This is the Art Deco style.

On black kent paper, after tracing the shape of jewelry with white charcoal paper, using two kinds of white ink pens and silver colored brush, they painted the diamonds of different sizes. To express the brightness and shadow, they used the technique to look them more real.

Some of them draw the tiara of the Edwardian era.

In the end, color stones painted on the white porcelain tiles were shown.

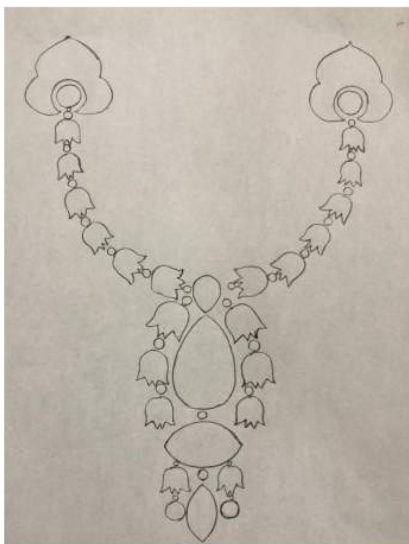
Those were painted by some different kind of paints which give a effect of transparency of the color stones.

Till morning to the evening, time had quickly passed, not everything was finished.

However, participants had nice time to know about the jewelry and jewelry drawing.

Additionally, painted samples on the white porcelain tiles were shown.

Those were painted color stones using special porcelain paints of high transparency by some different techniques.





## Visit to KEISEI ISOGAYA MUSEUM

I'd like to recommend you the wonderful art museum located at Nasu-Shiobara.

In his egg farming business, the founder of Keisei Isogaya Museum was successful enough to collect these unique modern Kutani ware treasures. He started purchasing Kutani from 1975 and his collection amounts in total to over 1,000 pieces at present. The museum is now open to general public, intending to preserve them at the museum and pass his collection of Kutani beauty down the generations. With the exhibit, the visitors would get to know the history of Kutani wares. Kutani wares were exported to widely abroad, Europe and North/South America for the purpose of earning foreign currency at the time when there was no other such sellable items than the Kutani after Meiji Restoration in 1867.

Now Kutani wares have been bought back to Japan from the foreign countries to which the wares were exported to since the Meiji Restoration period.

From the exhibit you could appreciate the dedication and contributions of these artists. It's a wonderful collection you feel the soul of craftsmanship in those days.

---

Keisei Isogaya Museum

Sekitani 1089-1, Nasu-Shiobara city, Tochigi-ken

<http://www.keisei-i.com>





**丸谷焼の世界**

時代を越えて語り継がれる名工芸の研ぎ澄まされた技をここに集結

丸声磯ヶ谷美術館

**鶏声磯ヶ谷美術館**

栃木県那須塩原市関谷1089-1 TEL 0287-35-3332  
<http://www.keisei-i.com> FAX 0287-35-3335

〔ご利用のご案内〕

〈開館日〉  
 土・日曜日及び祝祭日  
 前立、お盆(8月13日~8月15日)、  
 年末年始(12月28日~1月5日)を除く

〈開館時間〉  
 10:00~17:00  
 (入館は16:30まで)

〈入館料〉  
 一般 500円  
 中・高生 300円  
 小学生以下 無料  
 (団体の場合はご相談)  
 団体割引 20名様以上、20%割引  
 (事前予約が必要です)

〔交通案内〕

○お車をご利用の場合  
 東北自動車道 西那須野塩原インターより 約10分

○JR・バスをご利用の場合  
 JR那須塩原駅より  
 JRバス「塩原温泉行」約44分「アグリバル塩原」下車  
 JR西那須野駅より  
 JRバス「塩原温泉行」約22分「アグリバル塩原」下車  
 バス停より 徒歩約3分



## Visit to SUPERCRAFT by Toshikane jewelry

This July I paid a visit to a show by Toshikane jewelry in Shibuya, Tokyo.

The show was the first planned exhibition in the world, collecting and showing at once the valuable pieces of Toshikane porcelain jewelry that were created in Japan but had been remained unrecognized for a long period of time. Toshikane jewelry had a tradition of 400 years and were made of famous Arita porcelain. They were made in the 1950s, the modern times but had been highly appreciated in the foreign countries as precious and valuable as Satsuma button created back in around 1870s of Meiji era. The appreciation is due to its delicate design and detailed workmanship that provides uniqueness like no other. Mr. Shunichi Kojima, a potter and Mr. Kanezou Minami, a porcelain painter, both of them were working at Arita and started to create sash clip fasteners made of porcelain under the brand of 'Toshikane' in 1931. It is a breakthrough that they initiated new application to sash clip instead of ivory or coral which was popular for sash clip material. When the Pacific War broke out, it was totally banned to produce luxury items like sash clip. Keeping up with the times, they shifted to making military emblems and chapters.

After the end of the war they started making accessories for the army and troops. The Oriental designs were preferred by Europeans and Americans and it is said that tens of thousands of orders were placed annually.

However, after the Plaza Accord in 1985, the exports to the US stopped and phased out and disappeared as the time went by. Today it is said that this phantom jewelry cannot be reproduced at present. Due to its rarity, the jewelry is increasing popularity among foreign collectors. At the auction these ceramic accessories as big as a small coin are now traded at a high price of several 100 dollars.





## New member information - as of September 30, 2019

Ms. Kagari Nagata, Kanagawa-ken, Japan

## “JPAC International Exhibition 2020”

April 23Thurs-24Fri, 2020

The application for participation starts in October. Please be sure not to miss every email from JPAC as all the communication shall be made in the form of email with regards to JPAC International Exhibition.

---

### Message

We are inviting and looking for photos of JPAC members' original works on HP and FB.

Posting your works on HP and FB means that your name and work will be made in public. If you agree on it, please send a picture of your work by way of the attached email on the member-only page, “About Member's Home Page Works”. If you can approve on posting on FB, please indicate your agreement.

Also, those who have already posted your works can replace the photos upon request.

We are looking forward to your original works.

We are happy to introduce a JPAC member's private or a member-organized painting studio or exhibition on the JPAC website and FB

If you wish to, please apply based on the “Member Exhibition Form” on the member-only page of the JPAC website.

"Please introduce your friends"

If you have your friends who would, you think, meet the JPAC eligibility requirements, please take an action for inviting him/her. You see an invitation file for that purpose on the homepage, so please download and print it for your invitation action.

---

---

---

Editor's note

---

I hope you will read the newsletter and find interesting information this time.

As it is getting into real autumn, some people are travelling many places and others are visiting various exhibitions. You appreciate the beauty of the changing seasons and the festivals of various spots around this time of the season. It would be great if you could make use of your appreciation as such to help make out your theme for the coming exhibition. (I know how difficult it is to create a theme for the show! It's easy to say but difficult to do ... lol)

With your cooperation, I am happy to finish this letter this time as well.

Ayako Goto

---